

## SPECIFICATIONS

<b>Type</b>	Double Sided	
<b>Where to fix</b>	Freestanding	
<b>LED Source</b>	LED Modules SA 4161 Equivalent from SA-LED Australia	
<b>Power Source</b>	Suitable Power Supply from SA-LED Australia	
<b>Dimension</b>	Length	Any Size
	Height	Up to 1,500mm
	Deep	200mm
		*Post deep : Max 150mm
<b>Face</b>	4.5mm Opal Acrylic	
<b>Return</b>	Aluminum Extrusion Bar - Mill(2B) Finish - White or Black - 2Pac Spray (Other colours)	
<b>Back</b>	ACM or Equivalent Material	
<b>Cover Size</b>	25 / 40 / 50mm	Removable Angle Trim

- Price do not include acrylic sheets.
- Price do not include packaging and delivery
- Artwork has to be provided by the client.
- Please make sure to include the original artwork files that is:
  - ✓ 1:1 Scale
  - ✓ 100% Vector(\*.eps)
  - ✓ PDF File format (\*.pdf)
  - ✓ CorelDRAW (\*.cdr, \*.dxf)

## 3D STRUCTURE

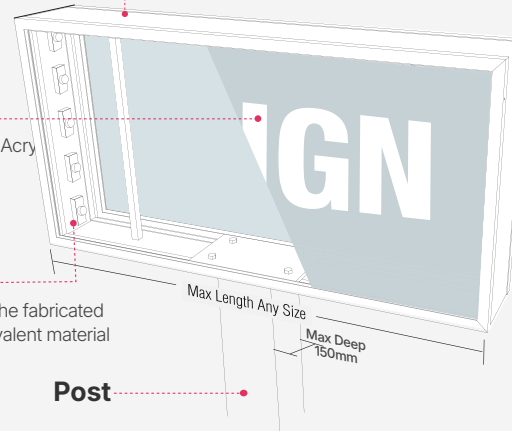
## Front View

**Return**  
Aluminum

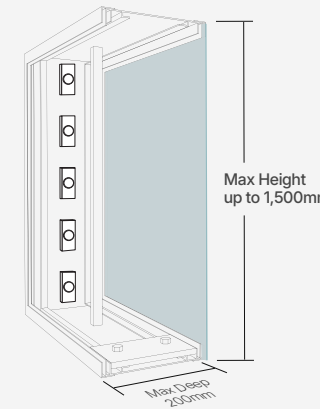
**Face**  
4.5mm Opal Acry

**LEDs**  
Installed on the fabricated  
ACM or equivalent material

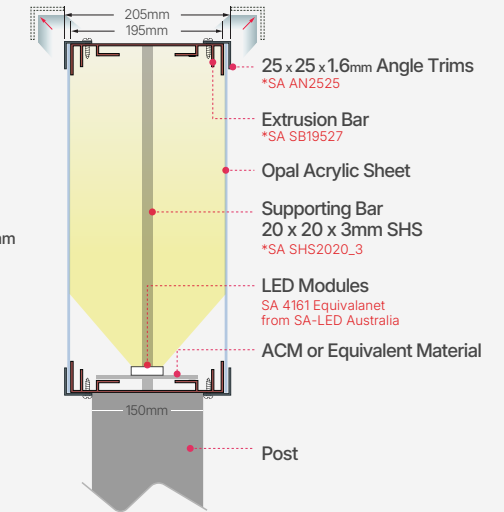
**Post**



## Side View

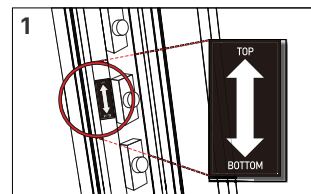


## Side View : Freestanding

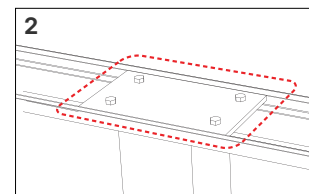


\*All LED modules, power suppliers, extrusion bars, angle trims and other bars can be purchased in [www.SA-LED.com](http://www.SA-LED.com)

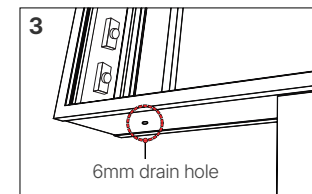
## INSTALLATION GUIDE



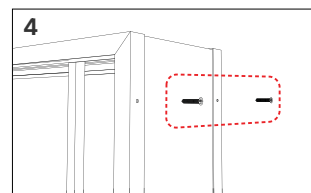
1 TOP & BOTTOM indicative sticker at the inside.



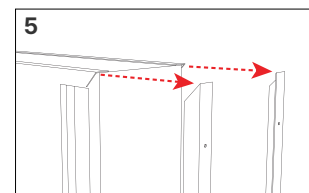
2 Weld an additional fixing base plate to the bottom of the frame to reinforce its structure.



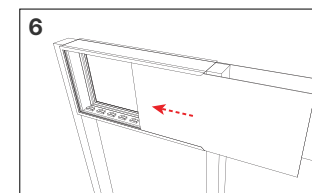
3 Predrilled 6mm drain holes on bottom.



4 Remove screw from angle trims for insert acrylic.



5 Remove angle trim from lightbox.



6 Insert acrylic face into body frame.

## PROJECTS

